



# Shell GTL Saraline

**Carbon Neutral\***

By protecting and restoring the environment

## INVESTING IN NATURAL ECOSYSTEMS

HELPING YOU REDUCE YOUR CARBON FOOTPRINT



\*Carbon Neutral: CO<sub>2</sub> compensation is not a substitute for switching to lower emission energy solutions or reducing the use of fossil fuels. Carbon credits are purchased and retired to compensate the calculated lifecycle CO<sub>2</sub>e emissions of the product. Although these carbon credits have been generated in accordance with international carbon standards, the compensation may not be exact.

# NATURE IS VITAL IN TACKLING CLIMATE CHANGE

Businesses and consumers want to reduce carbon emissions and we are helping to make this happen.

Many different solutions will be required for a successful transition to a low-carbon future, and we are working across a range of sectors to provide products with lower emissions.

As part of this broader effort, we also provide energy products that can be combined with carbon credits from natural ecosystems to compensate for product emissions.

By working with natural ecosystems to capture and store carbon emissions, we can help nature to play a bigger role in limiting global warming and meeting the aims of the Paris Climate Agreement.

This is a huge opportunity and one that we can all take right now. And at scale.

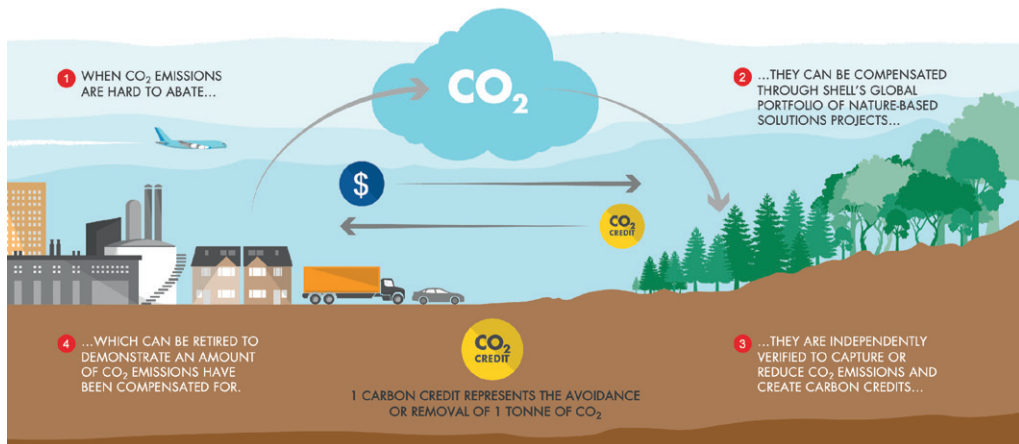


## HELPING YOU TO ACHIEVE CARBON NEUTRALITY

Shell is one of the most established traders of carbon credits in the world.

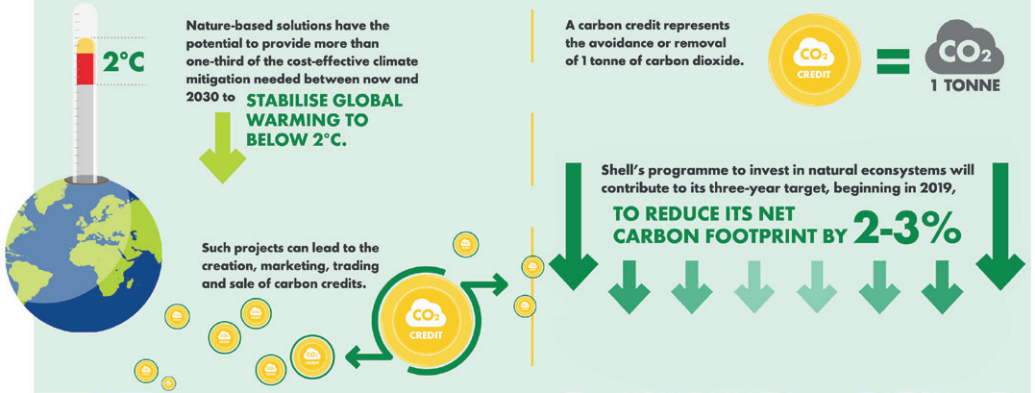
Shell works with nature-based projects around the world that help reduce greenhouse gas emissions, or capture and store CO<sub>2</sub> from the atmosphere, while improving the livelihoods of local communities and preserving biodiversity and wildlife.

These projects generate carbon credits which can be used to compensate for your company's emissions. Projects are verified by independent organisations to the highest internationally recognised standards.





## NATURE-BASED SOLUTIONS



# NATURAL PATHWAYS TO REDUCE EMISSIONS

Nature-based solutions can help you reduce your Net Carbon Footprint when using Shell energy products.

Nature-based solutions comprise all activities related to the protection, or re-development, of natural ecosystems – such as forests, grasslands and wetlands – to lower concentrations of greenhouse gases in the atmosphere. Such activities can lead to the marketing, trading and sale of carbon credits.



### FORESTS

- Avoiding deforestation
- Restoring degraded forest
- Improving forest management
- Afforestation
- Reforestation



### AGRICULTURE & GRASSLANDS

- Biochar for soil amendment
- Restore trees in croplands
- Improve nutrient management
- Improve rice cultivation
- Sustainable grazing
- Avoided grassland conversion



### WETLANDS

- Coastal restoration and protection
- Peat restoration and protection

# PORTFOLIO HIGHLIGHTS

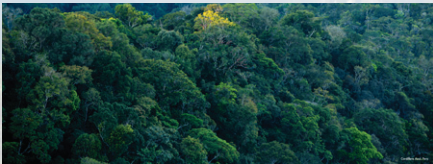
## CORDILLERA AZUL NATIONAL PARK

### PERU, SOUTH AMERICA

Developed by Centro de Conservación, Investigación y Manejo de áreas Protegidas (CIMA)

#### PROJECT HIGHLIGHTS

- **2.5 million carbon credits** generated on average each year
- **1.6 million** hectares of forest protected
- Safeguarding **28 high conservation value** species protected
- Supports **665 jobs** – **40%** of which are held by women
- Helping **6 communities** to improve schools, benefiting **5,000 people**



## 2.5 million CARBON CREDITS GENERATED on average each year

Located in Peru's high forest between the Andes and the Amazon basin, this Cordillera Azul National Park project restores degraded forests with new agroforestry systems growing cacao and coffee.

Alongside preventing more than 2.5 million tonnes of carbon being released into our atmosphere, the project provides income for local communities – including the 250,000 people living around the park boundaries – and protects the unique biodiversity of the area, which is home to around 6,000 plant species and more than 180 species of fish.

For more information,  
please visit [www.shell.com/naturebasedsolutions](http://www.shell.com/naturebasedsolutions)  
or contact your Shell account manager.